

SUCCESS STORY

Forestry - National Nature Reserve

°THE CHALLENGE

The client requests an aerial survey of approximately 1km² at Hollymount National Nature Reserve in Northern Ireland.

There is little infrastructure present such as roads and paths. The target area is located in a undulating landscape, most of which is densely forested.

The aim of the survey is to assess the volume of the trees and vegetation and map the underlying topography more accurately.

This is a challenge for traditional terrestrial surveying methods due to the size of the area and the limited accessibility.



°THE STORMBEE SOLUTION

The STORMBEE UAV LiDAR solution is capable of scanning vast areas in a short space of time and is not limited in places where accessibility on the ground is poor.

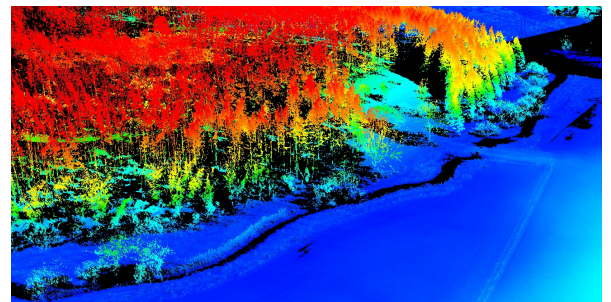
The entire project is scanned in a period of a few hours. The processing is completed and the final point cloud delivered to the client within a couple of days. The point cloud can be used to make accurate individual distance and volume measurements.

The fact that it can also be easily converted to geographical and topographical maps or digital surface models sets it apart from terrestrial surveying methods, photogrammetry or remote sensing.



°ADVANTAGES

- Unbeatable coverage, despite challenging terrain
- Ability to scan vast areas in a short time
- Simple, same day post-processing using STORMBEE's in-house software
- Relatively low costs
- Ability to construct models based on scan data under vegetation



www.stormbee.com

Follow us on LinkedIn and Twitter : STORMBEE



STORMBEE

UNBEATABLE ACCURACY IN MOBILE 3D LASERSCANNING