



# PRODUCTS

Mobile 3D  
Laserscanning Solutions



# STORMBEE

UNBEATABLE ACCURACY IN MOBILE 3D LASERSCANNING

[WWW.STORMBEE.COM](http://WWW.STORMBEE.COM)

# UAV SPECIFICATIONS

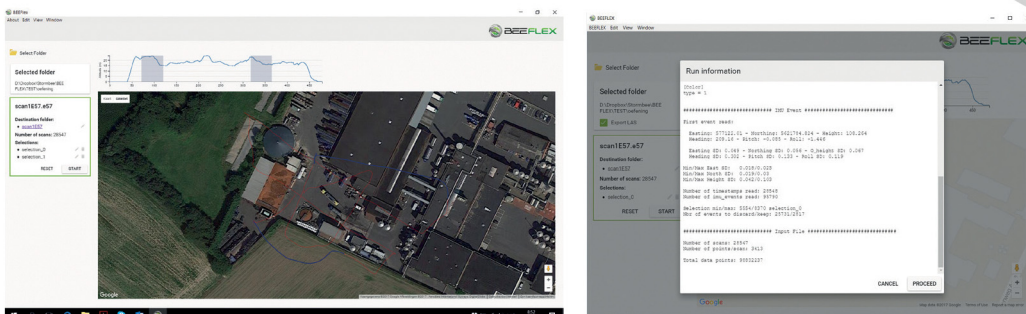
- Dimensions: 145 cm x 150 cm x 60 cm
- Size for transport: 85 cm x 75 cm x 50 cm
- Weight: 15 kg (excluding scanner)
- Fully automatic flight trajectory
- Flight time: 15 minutes
- Flight Speed: 0 to 15 m/s
- Altitude: 10 to 100 m
- Wind resistance: 30km/hr
- Operating environment temperature: -5C / 45C
- Full carbon fiber frame with foldable motor arms
- M.T.O.W. : 25kg
- Vertical field of view: 300°
- Export formats : LAS, E57
- Compatible with any Faro terrestrial laser scanner
- Measurement range dependent on Faro scanner option.
- Built-in power supply for Faro scanner
- Included software: flight planning, GNSS post-processing and pointcloud reconstruction



# BEEFLEX

STORMBEE's proprietary BEEFLEX software allows the user to create cm-accurate pointclouds from the in-flight data. Industry-standard export formats LAS and E57 are compatible with most post-processing software for pointcloud optimization, analysis and feature extraction.

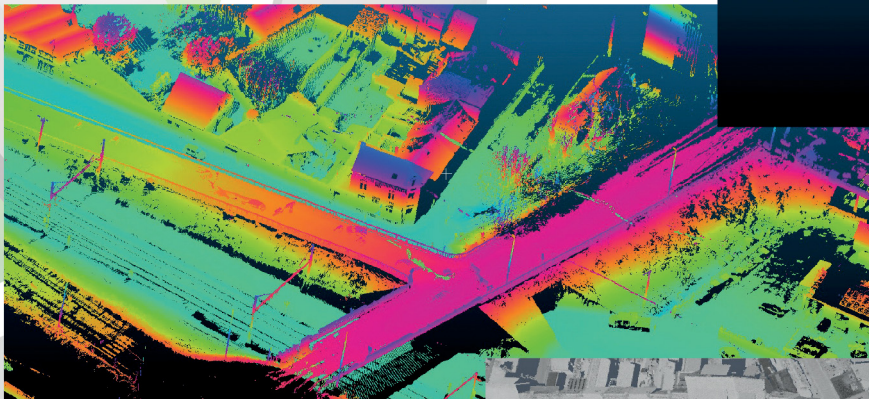
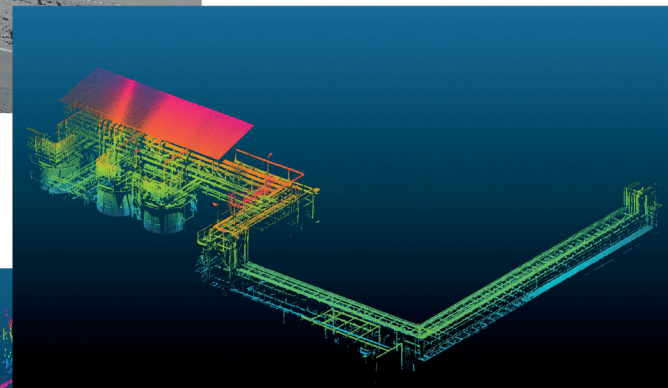
The user can choose to export the entire project as a single file, or extract flexibly selected flight strips via an intuitive google-map based user interface. BEEFLEX is designed with user-friendliness in mind, allowing anyone to start using the software with less than 1 hour of training.



# APPLICATIONS

STORMBEE offers market value worldwide and can be used for various purposes. STORMBEE is often used for **infrastructure surveys** and can also contribute to the field of **agriculture** and **forestry**. STORMBEE can be very precious for **civil engineering** and surveying and also is a great help for **public safety** and **archeology**. STORMBEE is essential for crime scene and forensic investigators. These assets are only a few applications proving that STORMBEE is an undeniable and valuable gain for industry, authority, government and police departments.

The concept of STORMBEE is high-tech. STORMBEE is state of the art technology thanks to the unique, compatible and fluid collaboration with FARO, specialised in airborne solutions and sophisticated scanners. The partnership between STORMBEE and FARO makes it possible to scan efficiently and quickly large areas even **chemical plants, large factories, open pit mines**.



**STORMBEE is a pioneer in mobile LIDAR technology.  
It engineers, designs and manufactures  
customised application solutions in-house.**

**STORMBEE's compatibility with FARO 3D scanners  
is a unique concept that offers market value worldwide.**

**There is no doubt about STORMBEE's undeniable range of benefits.**

**An absolute gainmaker for industry.**

**An unbeatable weapon for crime scene & forensic investigators**

**and by far for all domains of use:**

**the best performing mobile**

**3D-laserscanning solution on the market.**

**A unique concept from a whole new perspective!**

**[WWW.STORMBEE.COM](http://WWW.STORMBEE.COM) - [SALES@STORMBEE.COM](mailto:SALES@STORMBEE.COM)**